

Brinell
Accessories

Brinell Accessories

V 1.0 System

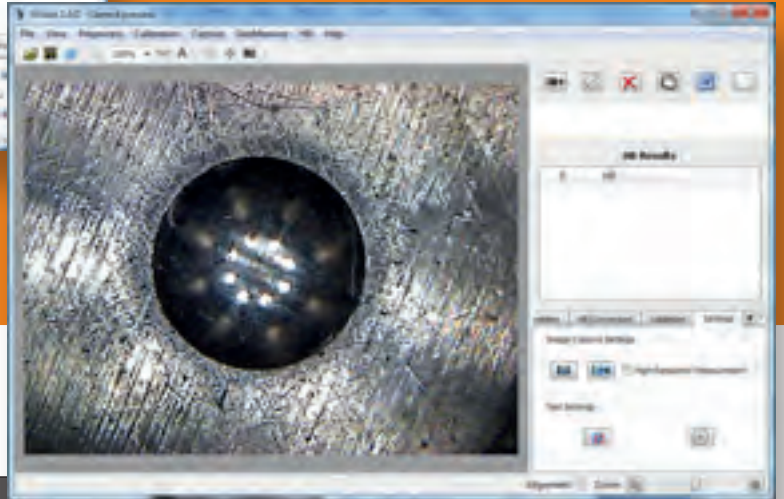
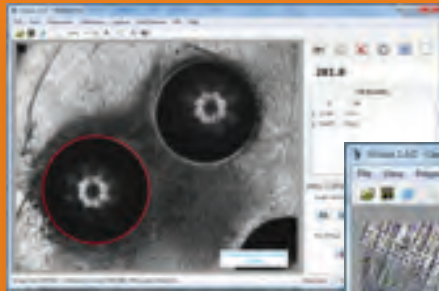


V 1.0 System

Main Function:

1. **Basic function:** include all functions of image processing and measurement system, such as image capture, calibration, image processing, geometric measurement, annotation, photo album management and fixed times print etc;
2. **Automatic measurement:** Automatically capture the indentation measure the diameter and calculate the corresponding value of Brinell hardness;
3. **Manual measurement:** Manually measure the indentation, the system calculates the corresponding value of Brinell hardness;
4. **Hardness conversion:** The system can convert the measured Brinell hardness value HB to other hardness value such as HV, HR etc;
5. **Data statistics:** The system can automatically calculate the average value, variance and other statistical values the hardness;
6. **Standard exceeding alarm:** Automatic mark the abnormal value, when the hardness exceeds the specified value, an alarm will appear;
7. **Test report:** Automatically generate the report in Word or Excel format, report templates can be modified by the user.
8. **Easy to use:** Click on the interface button or press the camera button to automatically complete all the work;
9. **Strong noise resistance:** The advanced and reliable image recognition technology can handle the indentation recognition on the surface of complex samples, two automatic measurement modes to deal with difficult samples;
10. **Automatic calibration:** System provided with calibration function. With a calibration grid, the system can automatically implement full calibration for calibration data.

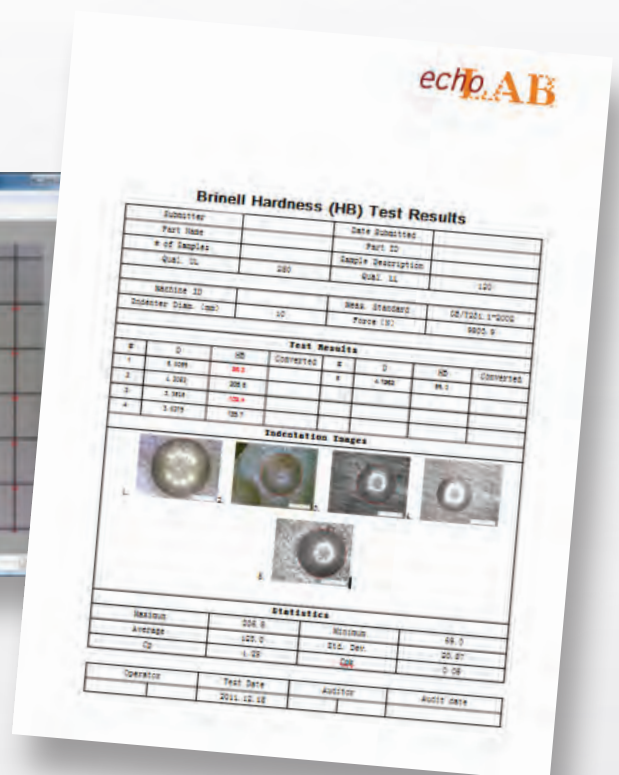
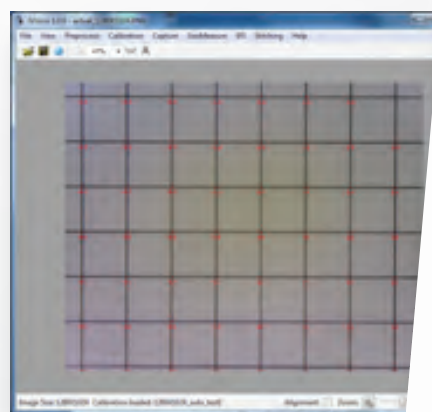
Brinell Accessories



V 1.0 System

Standard Configuration:

1. Computer (Hard disk: 500G, Memory: 2G, 19" LCD screen) 1 set
2. Ink jet printer 1 set
3. Portable camera device 1 set
4. USB softdog 1 pc
5. Measuring software 1 pc



Brinell Accessories

CCD Image Automatic Measuring System



Brinell CCD Image Automatic measuring System

Introduction:

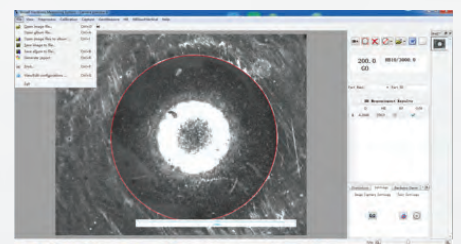
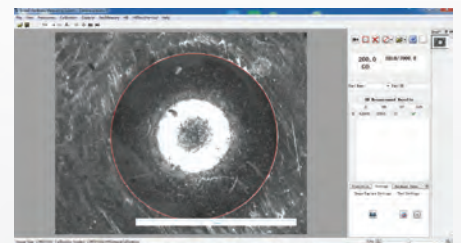
CCD Image automatic measuring system allow test performing through mouse click, and CCD camera for directly observe and measure the indentation on the display, test conditions setting, results clearly and conveniently managed and displayed. Automatic calculation of indentation depth, statistical calculations, conversions, curves, data managing and export as Word or Excel documents.

Main Functions:

1. **Basic function:** include all functions of image processing and measurement system, such as image capture, calibration, image processing, geometric measurement, annotation, photo album management, etc;
2. **Automatic measurement:** Automatically capture the indentation, measure the diameter and calculate the corresponding value of Brinell hardness;
3. **Hardness conversion:** The system can convert the measured Brinell hardness value HB to other hardness scales such as HV, HR etc;
4. **Data statistics:** Automatic calculation of average value, variance and other statistical values;
5. **Standard exceeding alarm:** Automatic mark abnormal value, when the hardness exceeds the specified value, an alarm will appear;
6. **Test report:** Automatically generate the report in Word or Excel format, the report templates can be modified by the user.
7. **Easy to use:** Click on the interface button, press the camera button or press the run button to automatically complete all the steps;
8. **Strong noise resistance:** The advanced and reliable image recognition technology can handle the indentation recognition on the surface of complex samples, two automatic measurement modes to deal with difficult samples;
9. **Automatic calibration:** System provided with calibration function. With a calibration grid, the system can automatically implement full calibration for calibration data.

Standard Configuration:

1. Computer (Hard disk: 500G, Memory: 2G, 19" LCD screen) 1 set
2. Ink jet printer 1 set
3. CCD camera 1 set
4. USB softdog 1 pc
5. Measuring software 1 pc



Brinell Accessories

LCD Video measuring device



LCD Video measuring device

Main Function:

LCD Video measuring device is composed by video measuring device, 8" color LCD monitor and connections components. With this device, the indentation can be directly showed on the monitor.

The measurement is more accurate. Avoids visual fatigue and human-made error, increasing working efficiency.

Standard Configuration:

1. 8" Color LCD monitor
2. Video measuring device
3. Video connection cable

Brinell Accessories

Indenters

Code	Description	
BI-1	Hard alloy steel \varnothing 1mm ball indenter	
BI-25	Hard alloy steel \varnothing 2,5mm ball indenter	
BI-5	Hard alloy steel \varnothing 5mm ball indenter	
BI-10	Hard alloy steel \varnothing 10mm ball indenter	
BT-IB1	\varnothing 1mm Hard alloy steel ball	
BT-IB2.5	\varnothing 2.5mm hard alloy steel ball	
BT-IB5	\varnothing 5mm hard alloy steel ball	
BT-IB10	\varnothing 10mm hard alloy steel ball	

Test tables

Code	Description	
BT-LTT200	Large plane test table \varnothing 200mm	
BT-LTT108	Large plane test table \varnothing 108mm	
BT-MTT60	Middle sized testing table \varnothing 60mm	
BT-VTT80	V-Shaped test table \varnothing 80mm	
BT-VTT40	V-Shaped test table \varnothing 40mm	
BT-CTT-XXXXXXX	Customized standard testing tables	Available further customization for V-Shaped and Round-Shaped test table. The selectable table's diameter depends about the relative models.

Additional options

Code	Description	
BT-APP	Additional printer paper roll	
BT-WB	Work bench	

Hardness blocks

Code	Scale	Range
HB-BW10/3000	HBW 10/3000	180-650
HB-BW10/1500	HBW 10/1500	180-650
HB-BW10/1000	HBW 10/1000	90-450
HB-BW10/500	HBW 10/500	90-450
HB-BW5/750	HBW 5/750	180-650
HB-BW5/250	HBW 5/250	90-450
HB-BW2.5/187.5	HBW 2.5/187.5	180-650
HB-BW2.5/62.5	HBW 2.5/62.5	90-450
HB-BW1/30	HBW 1/30	150-250

Other hardness scales and ranges available on request



DEVCO S.r.l.

Via Marzabotto, 59 20037 Paderno Dugnano (MI)
Tel +39 0283591153 - Fax. +39 0295441300
www.devcosrl.it - e-mail: info@devcosrl.it

www.echo-lab.it